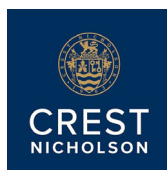




HENLEY GATE TRAVEL NEWSLETTER



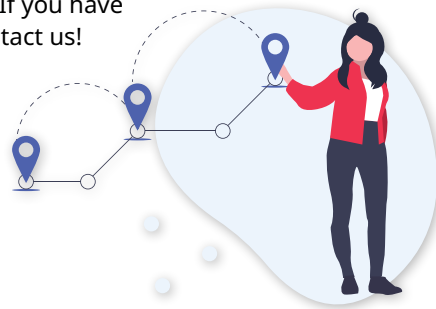
How's it going?

On behalf of Crest Nicholson, Smarter Travel thanks everyone who took part in last years' Travel Survey. Your feedback helps us understand your travel habits and how we can support more sustainable travel. Look out for this years' Travel Survey. You'll get an invitation to participate in June 2025 and there are 3 more prizes to be won by sharing your travel habits.

Don't forget, the first occupier of each household can claim either a £50 active travel voucher, or 2-week bus pass for local services, or a £50 Greater Anglia train voucher. Visit henleygatetravel.co.uk to claim yours today.

We hope you find this newsletter helpful. If you have any travel questions, don't hesitate to contact us!

**Your Travel Plan Coordinator,
Smarter Travel Ltd**

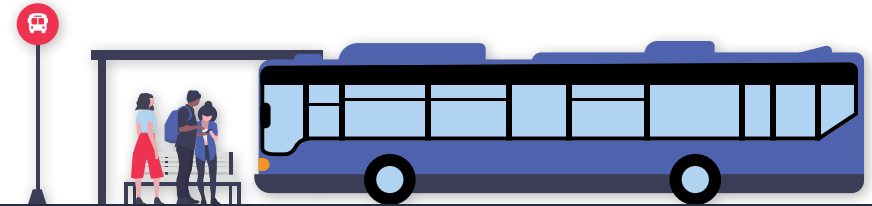


Public Transport

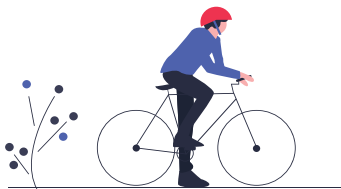
Your nearest bus stop is Defoe Road, located along Henley Road, approximately a 1-minute walk from home. Use **First Bus** 116 Village Links service for travel to Ipswich Town Centre and Debenham. For tickets and timetable details, visit Firstbus.co.uk.

The nearest train station is **Westerfield**, only a 9-minute bike ride away. **Greater Anglia** operate direct trains to Ipswich and Felixstowe. Feel free to leave your bike at the station or take it with you on the train. Check if you need to book a space on the train by visiting: greateranglia.co.uk/travel-information/your-journey/cycling

Community transport can be used by those unable to use public transport due to age, disability, limited mobility or lack of public transport options. Visit the **Connecting Communities** section of the **Suffolk On Board** website to find local Ipswich services. Call 0330 175 8553 to book between Mon-Fri, 9am-5pm, service runs Mon-Sat, 9am-5pm. Do you have some spare time to volunteer as a driver? Call to find out how to help your local community.



Active Travel



Where's your sense of adventure?

Find it with **Strava.com** by following family, friends, even athletes' adventures, log over 30 activities on the app, such as walking and cycling, and have fun with new challenges.

Walking, wheeling or cycling? plan ahead with the **BBC Weather app** to check if you'll need to grab a coat.

Your local cycle repair shop, **Ranelagh Cycle Warehouse**, is a 12-minute cycle away from home, located at 18 Hadleigh Road, Ipswich, IP2 0EB. This store offers a wide range of bikes, e-bikes and accessories. Contact them on: 01473 250610.

Explore the local area on foot with the Ipswich & District Group at Ramblers.org.uk and find local walking routes and group walking events near Westerfield and Ipswich.

Spot any issues on the road, footpaths or cycleways? Report it to: suffolk.gov.uk/report-a-highways-issue

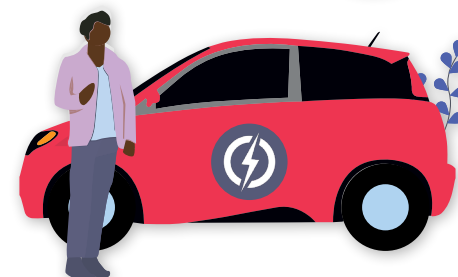


Car share/Go electric

Sharing a journey with 1 other person could cut your costs and carbon by 50%, not to mention it saves the average person £1,000 per year! Scan the QR code or visit **Liftshare.com** to start car sharing with Liftshare, it's free and flexible, only share when it suits you.

Go electric! As of April 2025, there were over 79,600 charging devices in the UK and growing fast. Find chargers and plan routes at Zap-map.com.

Thinking about charging your vehicle at home? Find out how you could do so by visiting: octopusev.com/charging/home-charging



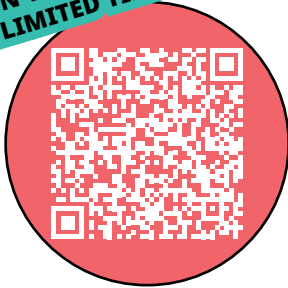
What's in it for you?

Are you the **first occupier** of your new home? If you are and haven't already claimed your welcome voucher, don't forget each household within Henley Gate can claim either **1 x two-week bus tickets** for local services, or a **£50 Active Travel Voucher**, or alternatively a **£50 Train Voucher** for Greater Anglia Services.

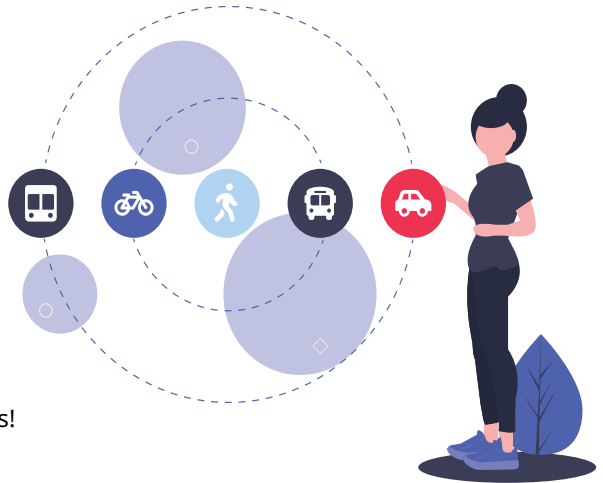
Terms and conditions apply: visit smartertravel.uk.com/contact-us/terms-conditions-2

Also, residents of Henley Gate are eligible to receive a free **Personal Travel Plan (PTP)**, created by your Travel Plan Coordinator, to help you explore sustainable travel options. Simply share your journey details by completing a short survey and we'll do the rest.

**DON'T FORGET TO CLAIM,
LIMITED TIME ONLY!**



Scan the QR code or visit
henleygatetravel.co.uk
to learn more and claim what is yours!



Contact Your Travel Plan Coordinator



01206 228800



HenleyGate@smartertravel.uk.com



Henleygatetravel.co.uk



Facebook.com/SmarterTravelSuffolk



SmarterTravel
from Richard Jackson Limited